

# ALUMINIUM LIFTING EQUIPMENTS

## REMOVABLE JIB CRANE

### Aluminium Slewing Crane - Rotates through 360°

REMOVABLE JIB  
CRANE



360°

300

300 T

500

500 T

600

600 T

ACCESSORIES

# Aluminium Slewing Crane - Rotates through 360°

( Item: - 360° Aluminium Slewing Crane - )

## Technical Data

- Suspension point at the bolt of the Trolley 3,000 mm.

- For indoor and outdoor use.  
- Rotates through 360°.  
- With lock detent / brake unit  
(Concept: similar to drum brake mechanism).

- Height of Slewing Crane:  
total height ..... 3,380 mm  
column height ..... 3,000 mm

- Boom arm:  
total length ..... 2,000 mm

- The Aluminium Slewing Crane is demountable into 5 pieces:

- column
- boom arm
- support profile, incl. brake unit
- brace

- trolley, incl. manual trolley direction band and can be easily mounted by at least two persons.

- The Aluminium Slewing Crane can be mounted respectively pegged directly

onto the ground or flange-mounted onto the bracket (item no. 23010).

load capacity ..... 250 kg  
weight ..... 130 kg

load capacity ..... 500 kg  
weight ..... 130 kg



## Bracket for Aluminium Slewing Crane

## Description

- Suitable for Aluminium Slewing Crane with 250 kg and 500 kg.
- For indoor and outdoor use.
- Flange-mounted onto Aluminium Slewing Crane
- For fixation onto wall e.g. concrete.



Picture: Aluminium Slewing Crane with bracket



Picture: Aluminium Slewing Crane and bracket demounted

# REMOVABLE JIB CRANE

# 300

**Max. capacity**  
300 kg

**Span = 2 m**

**1 bag of 24 kg**

**Easy assembly**

**1 unique removable jib crane for many locations**

Removable lifting solution, efficient and safe the jib crane contributes to improving the responsiveness of your teams. Its aluminum frame guarantee you maximum portability and facilitates interventions on sites difficult to access. A single man can so proceed safely to the assembly of 3 elements which compose the jib crane .

## STANDARD EQUIPMENT

300 Kg - Span 2 m max	Only 1 bag provided
Adjustable span from 900mm to 2000 mm	Fitting the pivot on ball bearings
2 heights available (2 extensions provided)	Powder coating on anodized
Jib crane in 3 parts / installation very fast	2 stainless shackles for hoist or accessory
Set weight = 24KG	

## OPTIONS

Stainless steel load cable : length 1 m
Jib crane extension
Galvanized lifting winch with stainless steel pulleys and cable
Winch for persons lifting with fall protection
Socket fixed to the floor, wall, or sealed



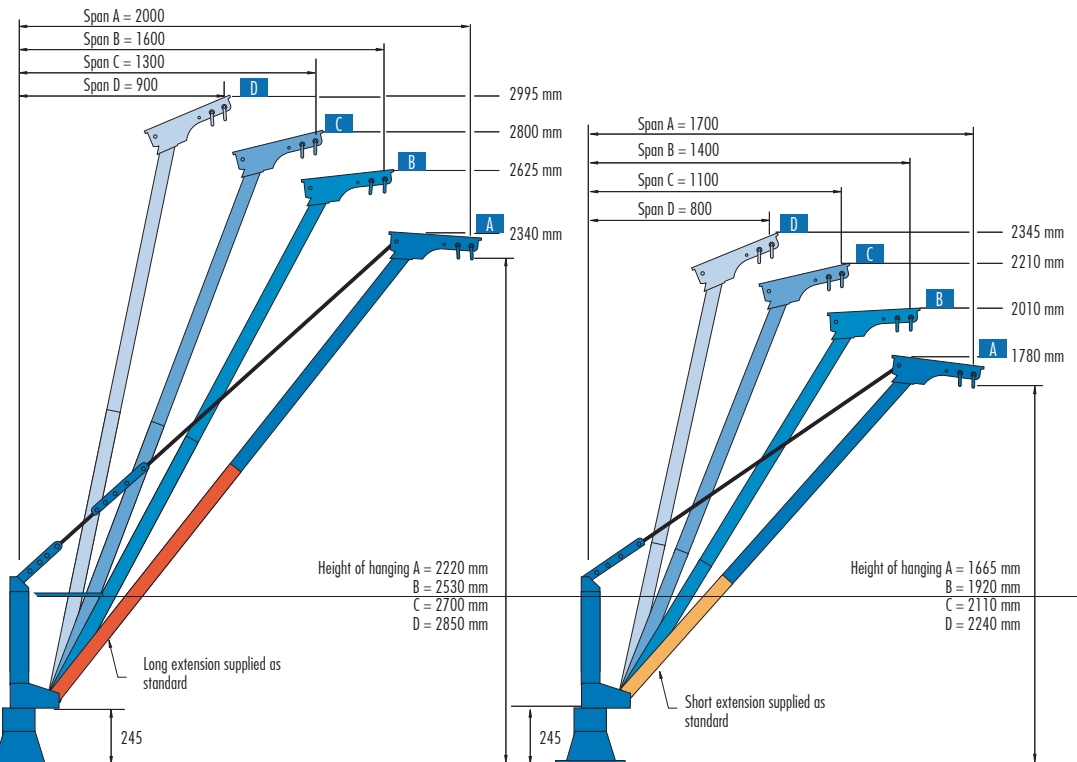
MOUNTING ON THE SOCKET



ASSEMBLY OF THE EXTENSION



ARM ASSEMBLY



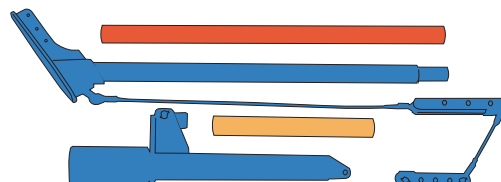
FIXATION WITH PULLING THE PIN



IMPLEMENTATION OF THE HOIST IMPLEMENTATION OF THE HOIST

## 1 JIB CRANE = 2 POSSIBLE METHODS OF ASSEMBLY

Carry bag (included) gives your team the ideal tool for interventions on site quickly and efficiently. All the parts that make up the 300 is grouped into one sturdy bag. A single person can carry the jib crane, assemble, place on the base and make the lift safely.



CONTENTS OF THE BAG

**1 jib crane = 1 bag of 24 Kg**

Get in standard 8 span-height couples. It is the ideal jib crane for lifting loads and people in treatment plant or by the sea, and generally anywhere a standard jib crane can not be used. Secure sockets and enjoy the lightness of a single removable jib crane for many configurations.



# REMOVABLE JIB CRANE WITH WINCH

# 300 T

Max. capacity  
300 kg

Span 2 m

2 bags

Easy assembly

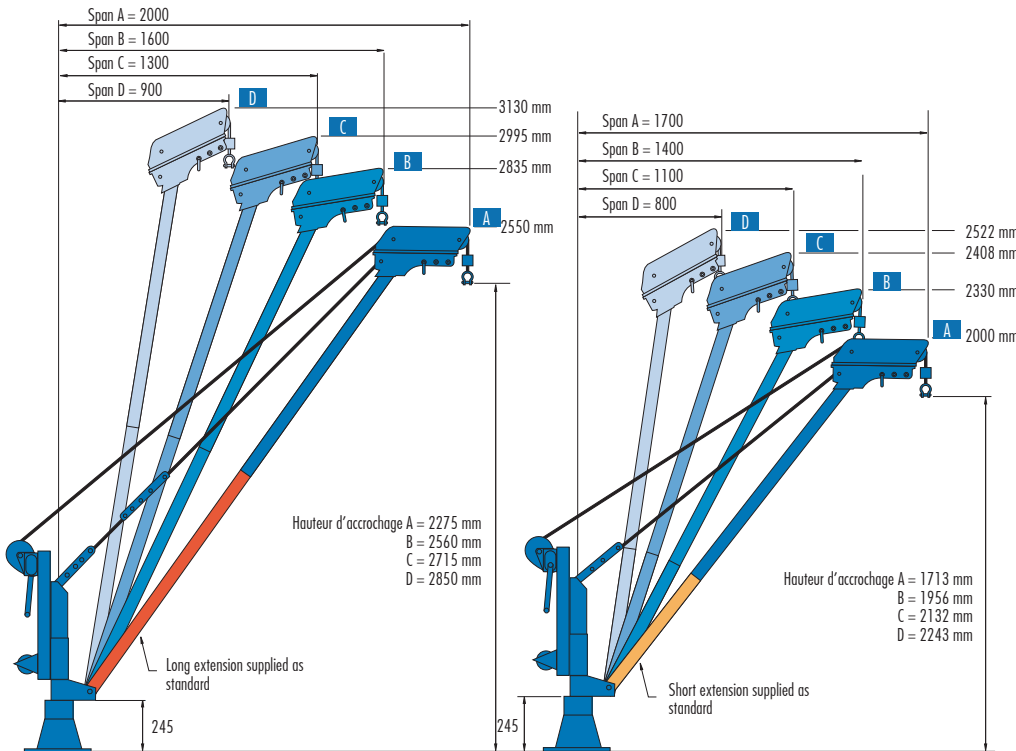
A single removable jib crane with winch for many locations

## STANDARD EQUIPMENT

300 Kg - Span 2 m max	2 carry bag provided
Adjustable span from 900mm to 2000 mm	Fitting the pivot on ball bearings
2 heights available (2 extensions provided)	Powder coating on anodized
Jib crane in 4 parts / installation very fast	2 stainless shackles for hoist or accessory
Set weight = 2 bags of less than 24Kg	1 stainless winch

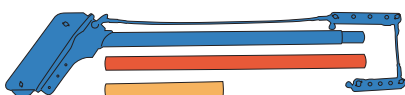
## OPTIONS

Stainless steel load cable : length 1m
Jib crane extension
Galvanized lifting winch with stainless steel pulleys and cable
Winch for persons lifting with fall protection
Socket fixed to the floor, wall, or sealed



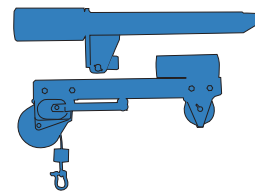
1 JIB CRANE = 2 POSSIBLE METHODS OF ASSEMBLY

1 jib crane with winch = 2 bags of less than 24Kg



CONTENTS OF BAG N°1

To minimize the risks due to carrying heavy loads, the components of the 300T are grouped into two bags robust. A single person can carry the jib crane, assemble on the socket and make the lift safely.



CONTENTS OF BAG N°2



MOUNTING ON THE SOCKET



ARM ASSEMBLY



FIXATION WITH PULLING THE PIN



CABLE ENTRY



MAKE LIFTING



# REMOVABLE JIB CRANE

# 500

**Max. capacity**  
500 kg

**Span = 1,5 m**

**1 bag of 24 kg**

**Easy assembly**

**1 unique  
removable jib  
crane for many  
locations**

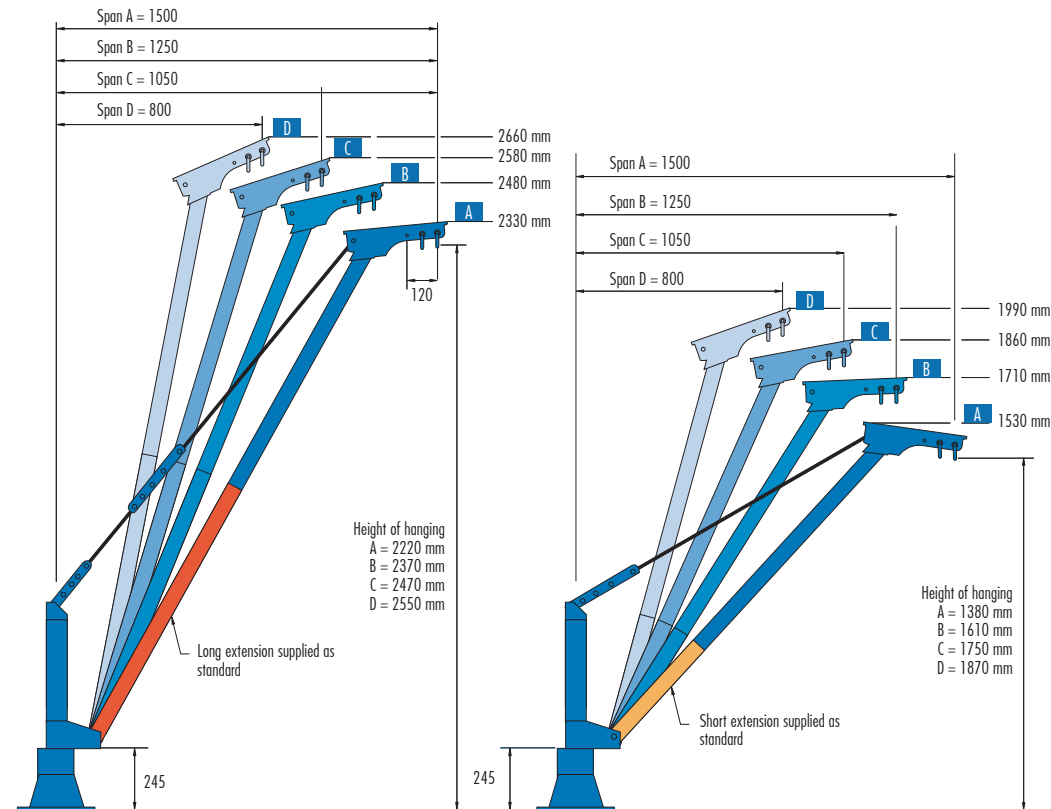
Removable lifting solution, efficient and safe the jib crane contributes to improving the responsiveness of your teams. Its aluminum frame guarantee you maximum portability and facilitates interventions on sites difficult to access. A single man can so proceed safely to the assembly of 3 elements which compose the jib crane.

## STANDARD EQUIPMENT

500 Kg - Span 1,5 m max	Only 1 bag provided
Adjustable span from 800mm to 1500 mm	Fitting the pivot on ball bearings
2 heights available (2 extensions provided)	Powder coating on anodized
Jib crane in 3 parts / installation very fast	2 stainless shackles for hoist or accessory
Set weight = 24KG	

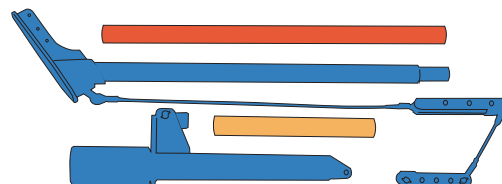
## OPTIONS

Stainless steel load cable : length 1m
Jib crane extension
Galvanized lifting winch with stainless steel pulleys and cable
Winch for persons lifting with fall protection
Socket fixed to the floor, wall, or sealed



## 1 JIB CRANE = 2 POSSIBLE METHODS OF ASSEMBLY

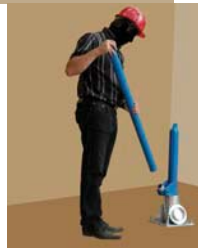
Carry bag (included) gives your team the ideal tool for interventions on site quickly and efficiently. All the parts that make up the 500 is grouped into one sturdy bag. A single person can carry the jib crane, assemble, place on the base and make the lift safely.



CONTENTS OF THE BAG



MOUNTING ON THE SOCKET



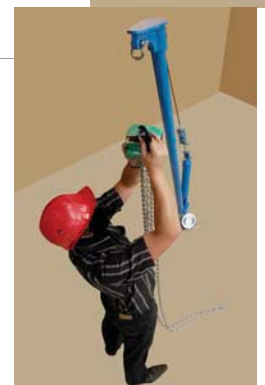
ASSEMBLY OF THE EXTENSION



ARM ASSEMBLY



FIXATION WITH PULLING THE PIN



IMPLEMENTATION OF THE HOIST

**1 jib crane = 1 bag of 24 Kg**



Get in standard 8 span-height couples. It is the ideal jib crane for lifting loads and people in treatment plant or by the sea, and generally anywhere a standard jib crane can not be used. Secure sockets and enjoy the lightness of a single removable jib crane for many configurations.



# REMOVABLE JIB CRANE WITH WINCH

# 500 T

Max. capacity  
500 kg

Span 1,5 m

2 bags

Easy assembly

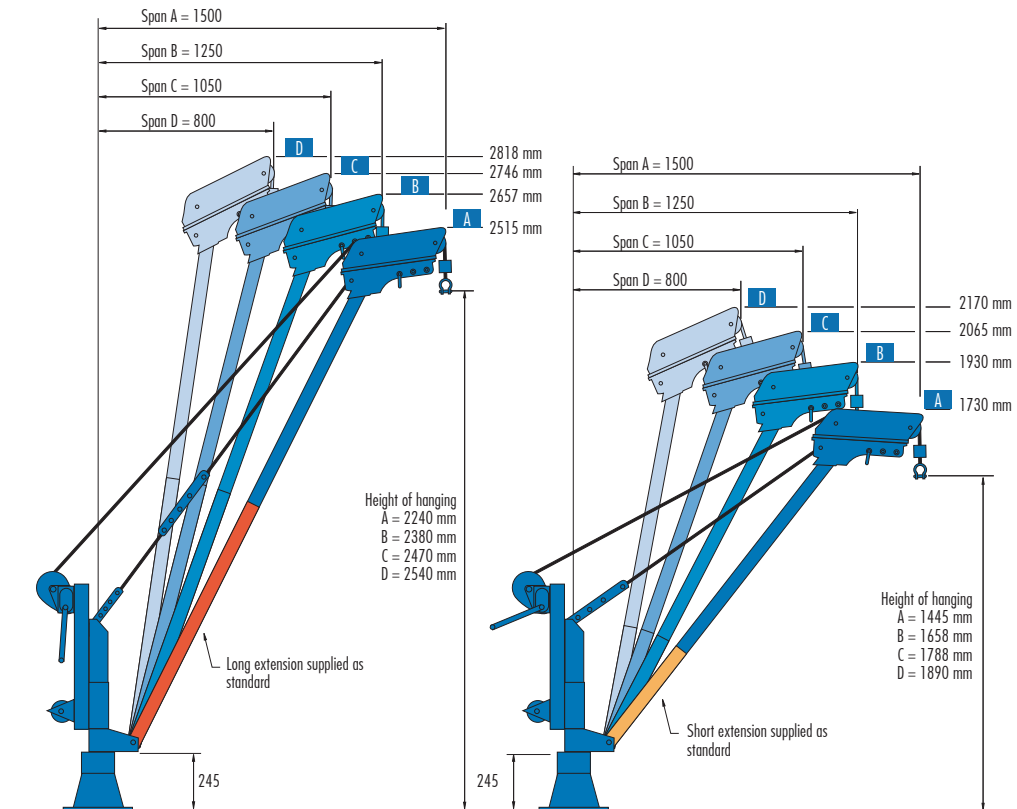
A single removable jib crane with winch for many locations

## STANDARD EQUIPMENT

500 Kg - Span 1,5 m max	2 carry bag provided
Adjustable span from 800mm to 1500 mm	Fitting the pivot on ball bearings
2 heights available (2 extensions provided)	Powder coating on anodized
Jib crane in 4 parts / installation very fast	2 stainless shackles for hoist or accessory
Set weight = 2 bags of less than 24Kg	1 stainless winch

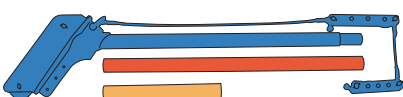
## OPTIONS

Stainless steel load cable : length 1m
Jib crane extension
Galvanized lifting winch with stainless steel pulleys and cable
Winch for persons lifting with fall protection
Socket fixed to the floor, wall, or sealed



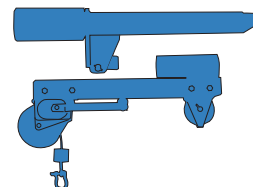
1 JIB CRANE = 2 POSSIBLE METHODS OF ASSEMBLY

## 1 jib crane with winch = 2 bags of less than 24Kg



CONTENTS OF BAG N°1

To minimize the risks due to carrying heavy loads, the components of the 500T are grouped into two bags robust. A single person can carry the jib crane, assemble on the socket and make the lift safely.



CONTENTS OF BAG N°2



MOUNTING ON THE SOCKET



ARM ASSEMBLY



FIXATION WITH PULLING THE PIN



CABLE ENTRY



MAKE LIFTING



# REMOVABLE JIB CRANE

# 600

**Max. capacity**  
600 kg

**Span = 1,5 m**

**1 bag of 24 kg**

**Easy assembly**

**1 unique removable jib crane for many locations**

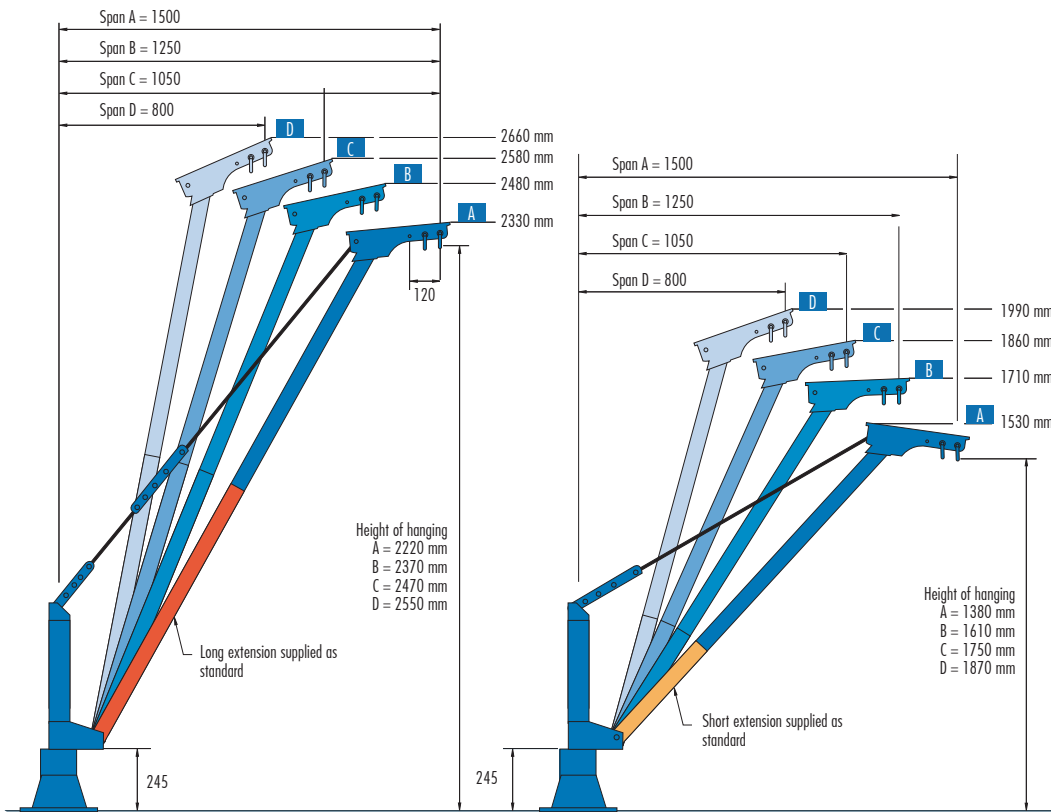
Removable lifting solution, efficient and safe the jib crane contributes to improving the responsiveness of your teams. Its aluminum frame guarantee you maximum portability and facilitates interventions on sites difficult to access. A single man can so proceed safely to the assembly of 3 elements which compose the jib crane.

## STANDARD EQUIPMENT

600 Kg - Span 1,5 m max	Only 1 bag provided
Adjustable span from 800mm to 1500 mm	Fitting the pivot on ball bearings
2 heights available (2 extensions provided)	Powder coating on anodized
Jib crane in 3 parts / installation very fast	2 stainless shackles for hoist or accessory
Set weight = 24KG	

## OPTIONS

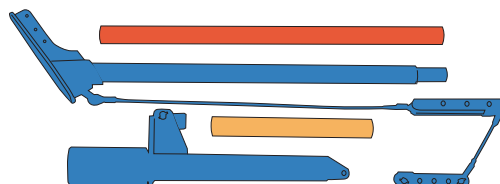
Stainless steel load cable : length 1m
Jib crane extension
Galvanized lifting winch with stainless steel pulleys and cable
Winch for persons lifting with fall protection
Socket fixed to the floor, wall, or sealed



## 1 JIB CRANE = 2 POSSIBLE METHODS OF ASSEMBLY

Carry bag (included) gives your team the ideal tool for interventions on site quickly and efficiently. All the parts that make up the 600 is grouped into one sturdy bag. A single person can carry the jib crane, assemble, place on the base and make the lift safely.

**1 jib crane = 1 bag of 24 Kg**



CONTENTS OF THE BAG



MOUNTING ON THE SOCKET



ASSEMBLY OF THE EXTENSION



ARM ASSEMBLY



FIXATION WITH PULLING THE PIN



IMPLEMENTATION OF THE HOIST

Get in standard 8 span-height couples. It is the ideal jib crane for lifting loads and people in treatment plant or by the sea, and generally anywhere a standard jib crane can not be used.

Secure sockets and enjoy the lightness of a single removable jib crane for many configurations.



# REMOVABLE JIB CRANE WITH WINCH

# 600 T

Max. capacity 600 kg

Span 1,5 m

2 bags

Easy assembly

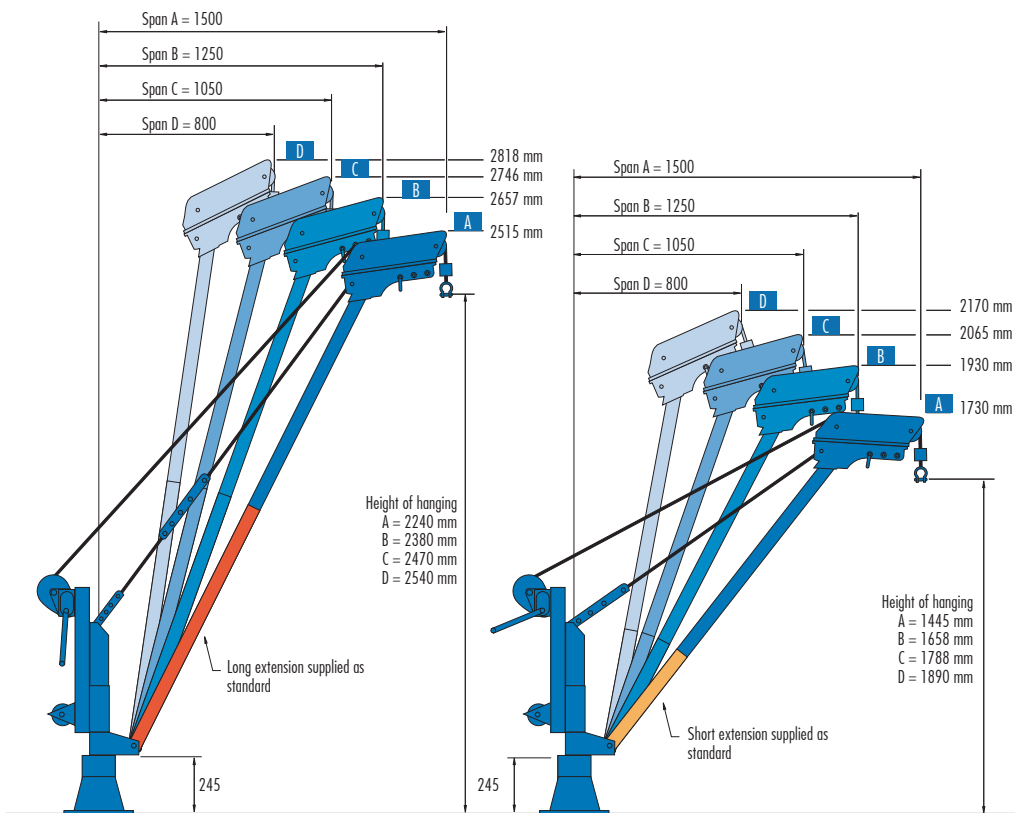
A single removable jib crane with winch for many locations

## STANDARD EQUIPMENT

600 Kg - Span 1,5 m max	2 carry bag provided
Adjustable span from 800mm to 1500 mm	Fitting the pivot on ball bearings
2 heights available (2 extensions provided)	Powder coating on anodized
Jib crane in 4 parts / installation very fast	2 stainless shackles for hoist or accessory
Set weight = 2 bags of less than 24Kg	1 stainless winch

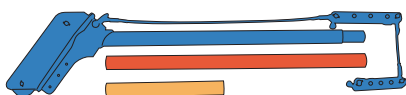
## OPTIONS

Stainless steel load cable : length 1m
Jib crane extension
Galvanized lifting winch with stainless steel pulleys and cable
Winch for persons lifting with fall protection
Socket fixed to the floor, wall, or sealed



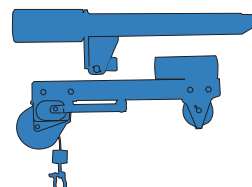
1 JIB CRANE = 2 POSSIBLE METHODS OF ASSEMBLY

1 jib crane with winch = 2 bags of less than 24Kg



CONTENTS OF BAG N°1

To minimize the risks due to carrying heavy loads, the components of the 600T are grouped into two bags robust. A single person can carry the jib crane, assemble on the socket and make the lift safely.



CONTENTS OF BAG N°2



MOUNTING ON THE SOCKET



ARM ASSEMBLY



FIXATION WITH PULLING THE PIN



CABLE ENTRY



MAKE LIFTING



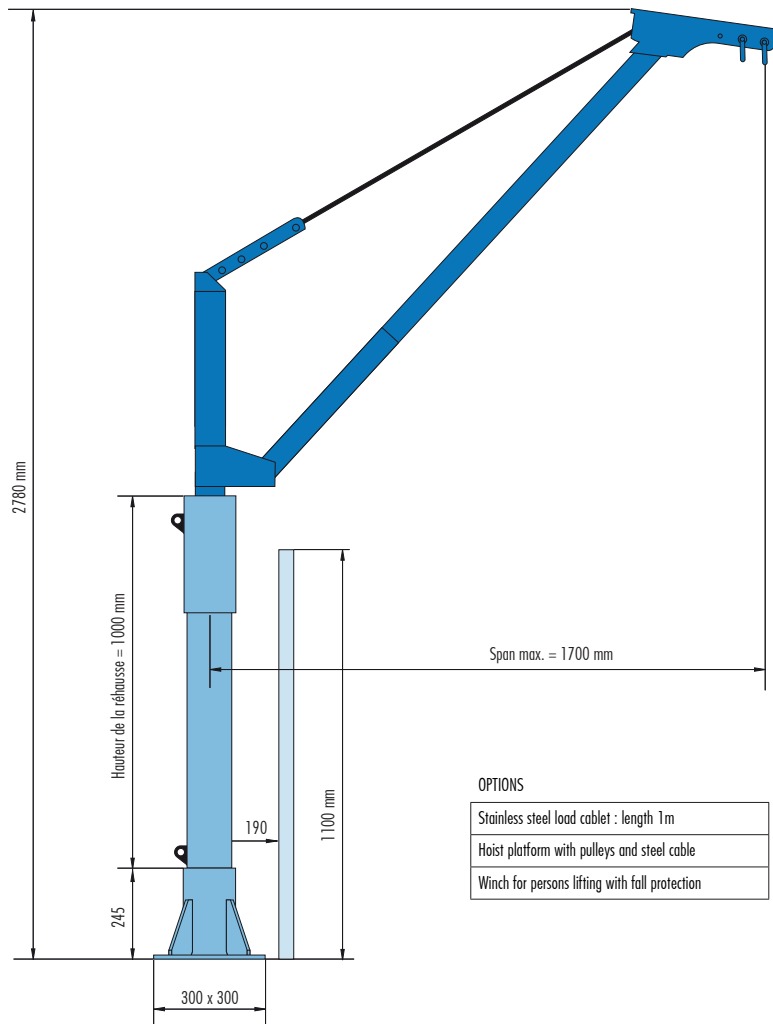
## ACCESSORIES

# SOCKETS EXTENSIONS

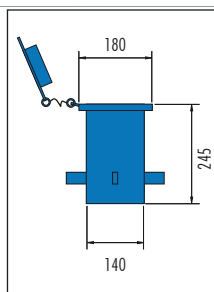


To meet all your mounting configurations, we offer a range of accessories to facilitate the implementation of our aluminum jib crane on your sites. The use of several jib crane sockets for the same jib crane greatly enhances handling costs. The extension allows the guardrail crossing or increase the lift height.

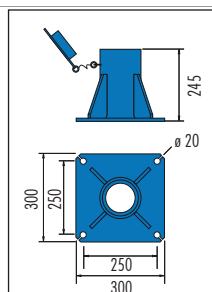
### Mounting example: low version Jib Crane 300 + extension



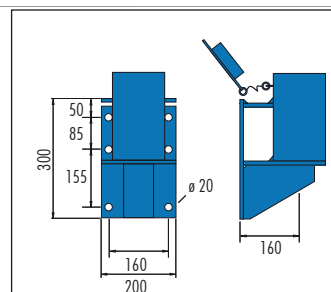
## Sockets



TO SEAL



ON THE FLOOR



WALLED

It is for the user to ensure the proper anchoring and quality of the support of the socket before any use of jib crane.

There are many sites which have the particularity of requiring mobile and in great quantities lifting equipments. When all the options of installation were exhausted, gantry PADC appears as an ideal solution. Lightness and robustness are the advantages of aluminium gantry structure.

The PADC is mounted on caster wheels for indoor or outdoor. It is movable in load on smooth and clean ground.

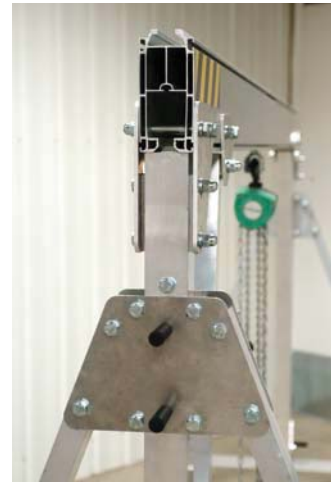
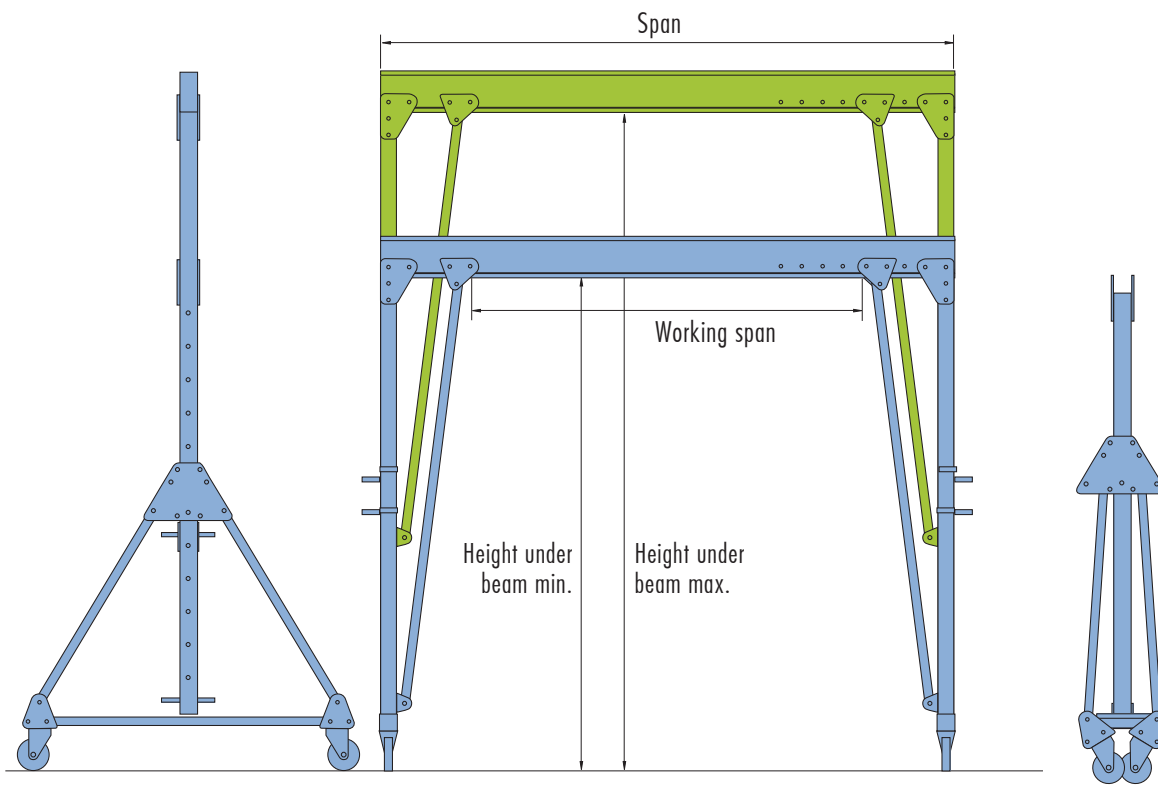


# ALUMINUM GANTRY CRANES MOVABLE UNDER LOAD

Max. capacity  
from 250 kg  
to 2000 kg

Optional  
electric or  
manual hoist  
Easy assembly

1 unique  
movable  
aluminium  
gantry crane  
for many  
locations



DESIGN WITH HOLLOW  
PROFILE FOR GREATER  
FLEXIBILITY



GRIP HANDLE  
FOR HEIGHT ADJUSTMENT

## DESCRIPTION

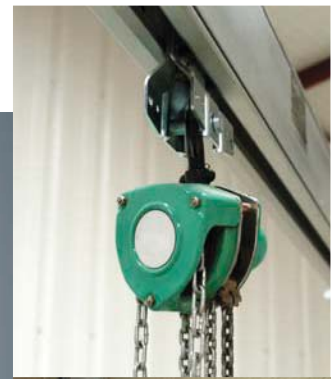
Light construction	Hoist trolley provided
Bolted joints	Height under beam can be adjusted by single person
Easy assembly with 8 bolts between leg and beam	Dismantles into 3 parts
Assembly requires 1 to 3 people, according to model	White polyamide wheels, with 2 locking wheels
Flexibility of movement due to its light weight	Maximum hoisting speed = 8m/min
Hollow-section gantry girder	Feet fold up for transport

## OPTIONS

Banded polyurethane wheels
2 additional locking wheels
Non-rotating wheels
Size can be adjusted to your needs by request
Hoist power supply cable
Electric or manual hoist

## COMPLETE RANGE

(Kg)	Span (m)									
250	2	2,5	3	3,5	4	4,5	5	5,5	6	
500	2	2,5	3	3,5	4	4,5	5	5,5	6	
1000	2	2,5	3	3,5	4	4,5	5	5,5	6	
1600	2	2,5	3	3,5	4	4,5	5			
2000	2	2,5	3	3,5	4					





# ALUMINIUM SPREADER BEAMS

## Aluminum monobeam spreaders

### Adjustable aluminum monobeam spreaders

Fixed or adjustable aluminum monobeam spreader  
 Adjustment of hooks by removable pins (adjustable spreader beams only)  
 Equipped with 2 articulated, rotating hooks with forged safety latches  
 Tear-resistant eyelets for use with synthetic slings, cables, etc.  
 Safety factor: 4  
 No structural weld  
 Manufactured according to standard NFE 52210  
 Group = FEM5  
 Pitch = 100mm (adjustable spreader beams only)  
 Maximum hoisting speed = 16m/min  
 Delivered with user's and maintenance manual and EC certificate of compliance  
 For superior capacities, contact us.

## H-bar aluminum fixed spreader beams

### H-bar aluminum adjustable spreader beams

H-bar aluminum fixed or adjustable spreader beam  
 Adjustment of hooks on secondary beams  
 Adjustment of secondary beams on the main beam  
 Equipped with 4 articulating, rotating hooks with forged safety latches  
 Tear-resistant eyelets for use with synthetic slings, cables, etc.  
 Safety factor: 4  
 No structural weld  
 Manufactured according to standard NFE 52210  
 Group = FEM5  
 Low headroom  
 Maximum hoisting speed = 16m/min  
 Delivered with user's and maintenance manual and EC certificate of compliance  
 For superior capacities, contact us.